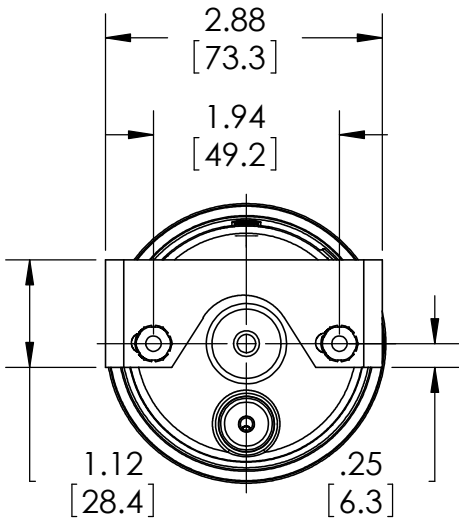
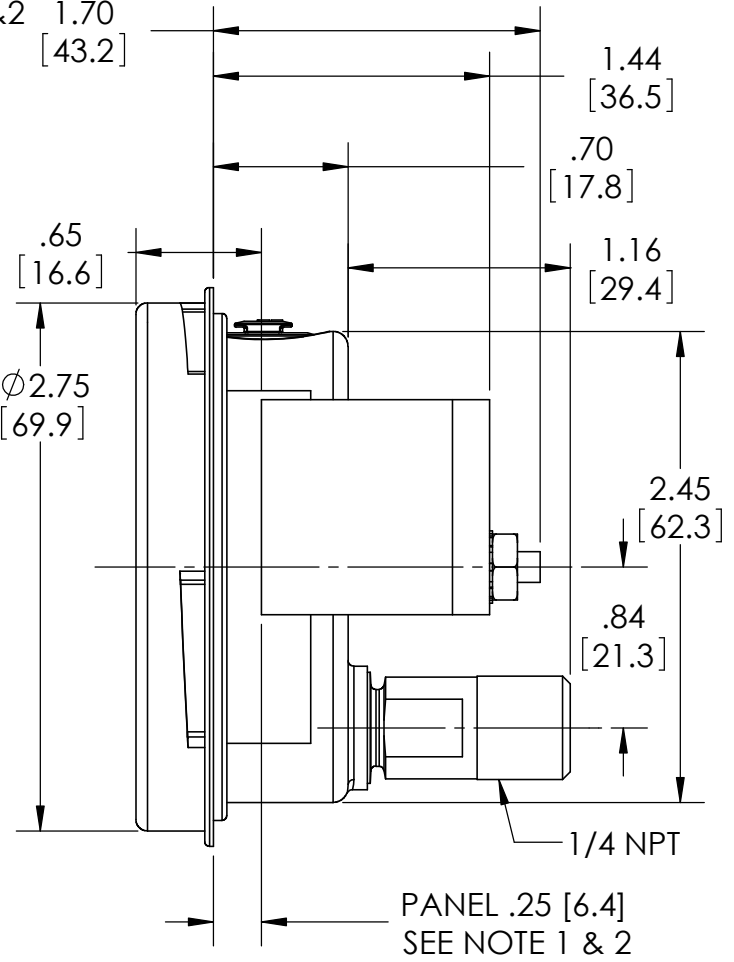
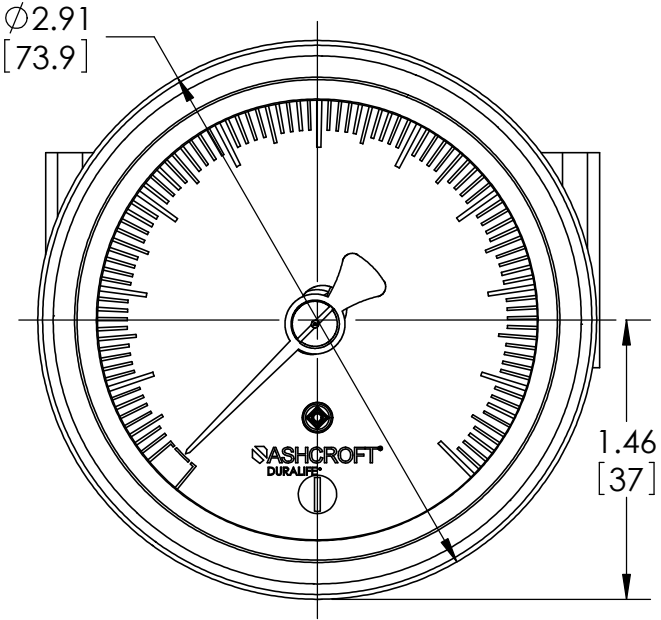




This drawing includes confidential information which is the property of ASHCROFT INC. This copy is loaned for a specific purpose, with the understanding that it will not be reproduced or used for any other purpose or disclosed to others, and it will be returned on demand.

SEE NOTE 1 & 2 1.70 [43.2]

NOTE 1: BRACKET POSITIONED FOR 1/4" PANEL
 NOTE 2: PANEL THICKNESS RANGES FROM 1/16" TO 1/4"
 NOTE 3: PANEL CUTOUT: 2.53 [64] +/- .03[1]



REAR VIEW

DIMENSIONS IN [] ARE MILLIMETERS

REV.	ECO	DESCRIPTION	BY	DATE
A	0004508	RELEASED GENERAL DIMS. FOR 25 1009 02B XUC	MJS	6/23/2010

This print certified correct for		General Dimensions		
Customer's Name		25 1009 02B XUC SERIES		
		DURALIFE		
Customer's Order No.	Drawn MJS	Date 6/23/10	Date of Issue	
Ashcroft Order No.	Checked	Date	SHEET-1	Rev.
Certified by	Date	Approved	Date	70A3065
				A

