

## Data Sheet

# Sanitary Diaphragm Seal Series 322

### FEATURES

- Stainless steel flush welded diaphragm seals
- Rupture protected due to embedded convolution behind the diaphragm
- Helium leak tested
- Minimized temperature errors
- Suitable for CIP and SIP

### TYPICAL USES

- Food and dairy processing
- Breweries, distilleries, wineries and citrus juice production
- Pharmaceuticals
- Personal hygiene and cosmetics industry
- Biotechnology
- Filtration



SEAL 322

### SPECIFICATIONS

Diaphragm Seal type:	322: Tri-Clamp (DIN 32676-A/B/C)
Process Connection:	1.5", 2", Tri-clamp®
Instrument Connection:	¼ NPT Female ½ NPT Female (Only for 2")
Pressure Rating: (MAWP)	Limited by clamp
Accuracy Effect:	+ 0,5% typical
Surface Roughness of diaphragm:	optional: Ra <0,38 µm (15 µin) electro polished
Fill Fluid:	Halocarbon®, silicone, deionized water, white mineral oil(silicone free)

### WETTED COMPONENTS

Diaphragm:	Stainless steel 316L (1.4435) Hastelloy C-276 (2.4819)
------------	---

Body:	Stainless steel 316L (1.4404) Hastelloy C-276 (2.4819)
-------	---

### MIN./MAX. TEMPERATURE LIMITS

Find the maximal allowable working temperature at page 2

### KEY BENEFITS

- Can be mounted to gauges, transmitters and switches
- No dead space
- Accessories attachable
- Flush diaphragm eliminates clogging
- Minimal fill volume reduces temperature error

### RECOMMENDED INSTRUMENTS

Mechanical:	T5500, Unigauge 1009
Transmitter:	E2-Series
Switch:	A-Series

### RECOMMENDED ACCESSORIES

Direct Reading:	Cooling tower for lowering high process temperatures
Remote Reading:	Capillary Line for remote places and lowering high process temperatures

## Data Sheet

### Sanitary Diaphragm Seal Series 322

ORDERING CODE		EXAMPLE:	15	322	S	02T	15	X6B
<b>Connection size:</b>								
<b>DIN 32676-A/B/C</b>								
15	1- 1/2" Tri-clamp®		15					
20	2" Tri-clamp®							
<b>Model:</b>								
322	Tri-Clamp Sanitary Diaphragm Seal, +/- 0,5% typical			322				
<b>Diaphragm and Wetted Parts Material:</b>								
S	Body Stainless steel 316L (1.4404) and diaphragm 316L (1.4435)				S			
H	Hastelloy® C-276 (2.4819)							
<b>Instrument Connection Size:</b>								
02T	1/4 NPT Female					02T		
04T	1/2 NPT Female (Only for 2")							
<b>Connection Size:</b>								
15	1.5" Tri-Clamp®						15	
20	2" Tri-Clamp®							
<b>Options (If choosing an option(s) must include a "X")</b>								
6B	Cleaned for gaseous oxygen service							X6B
6W	Product clean and degrease, not for strong oxidation application							
YF	Silicone free product 【Only for filling DI and MY (silicone free.)】							
EC	Electro polished wetted parts, Ra <0,38 µm (15 µin).							
CD2	Material test report according to EN 10204 / 2.2							
C3	Certificate according to EN 10204/3.1							
MQ	Positive Material Identification (PMI)							
CF	Halocarbon	(-57~199°C)						
CK	Silicone oil	(-40~260°C)						
DI	Deionized Water	(4~85°C)						
MY	White Mineral Oil, Silicone free.	(-10~205°C)						

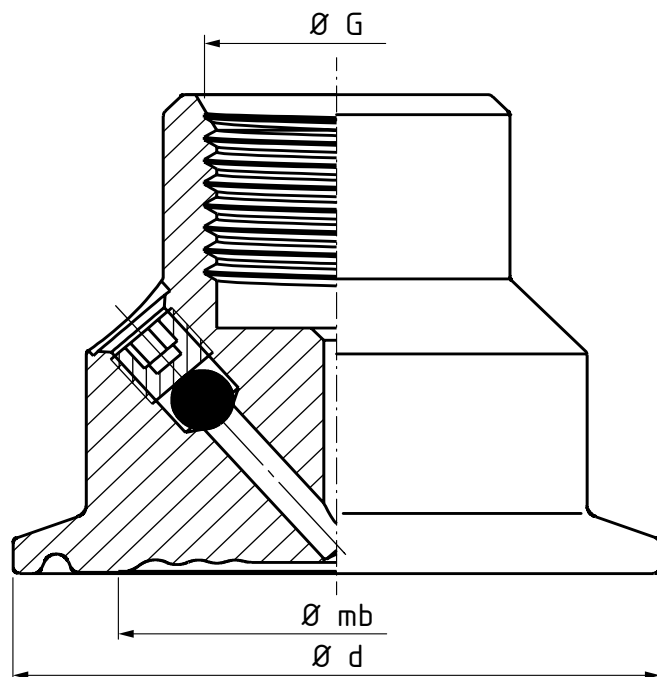
## Data Sheet

### Sanitary Diaphragm Seal Series 322 "Tri Clamp"

#### DIMENSIONS IN MM [INCH]

For reference only, consult Ashcroft for specific dimensional drawings

#### DIAPHRAGM SEAL 322



TRI-CLAMP BS4825 - ISO 1127 AND ASME-BPE					
CON. SIZE	CODE	Ød	Ømb	G	WEIGHT KG
1,5"	15	50,5 [1,99]	32 [1,26]	¼ NPT F	0,3
2"	20	64 [2,52]	44 [1,732]	¼ or ½NPT F	0,5